



10 Bloomsbury Way • Architects: BuckleyGrey Yeoman • Photographer: Hufton & Crow

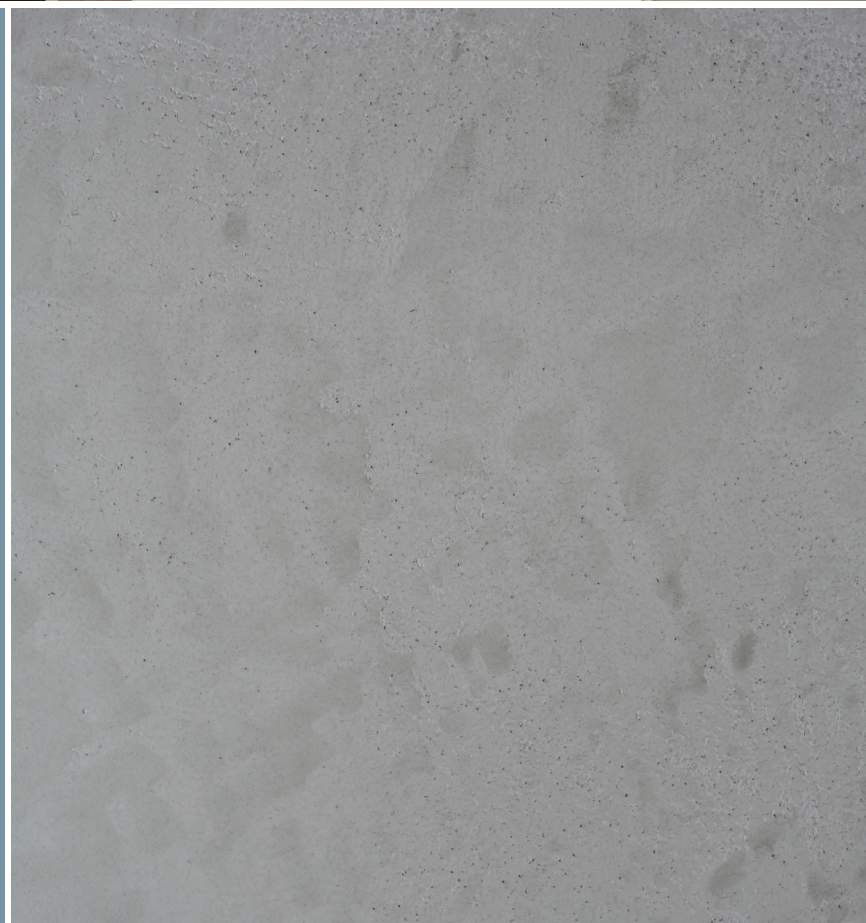
KonCrete

Armourcoat KonCrete® is an urban range of polished plaster colours and finishes designed for contemporary projects.

The range offers a wealth of design options to achieve a distinctive modern look, including distressed effects or recessed 'shutter' markings.

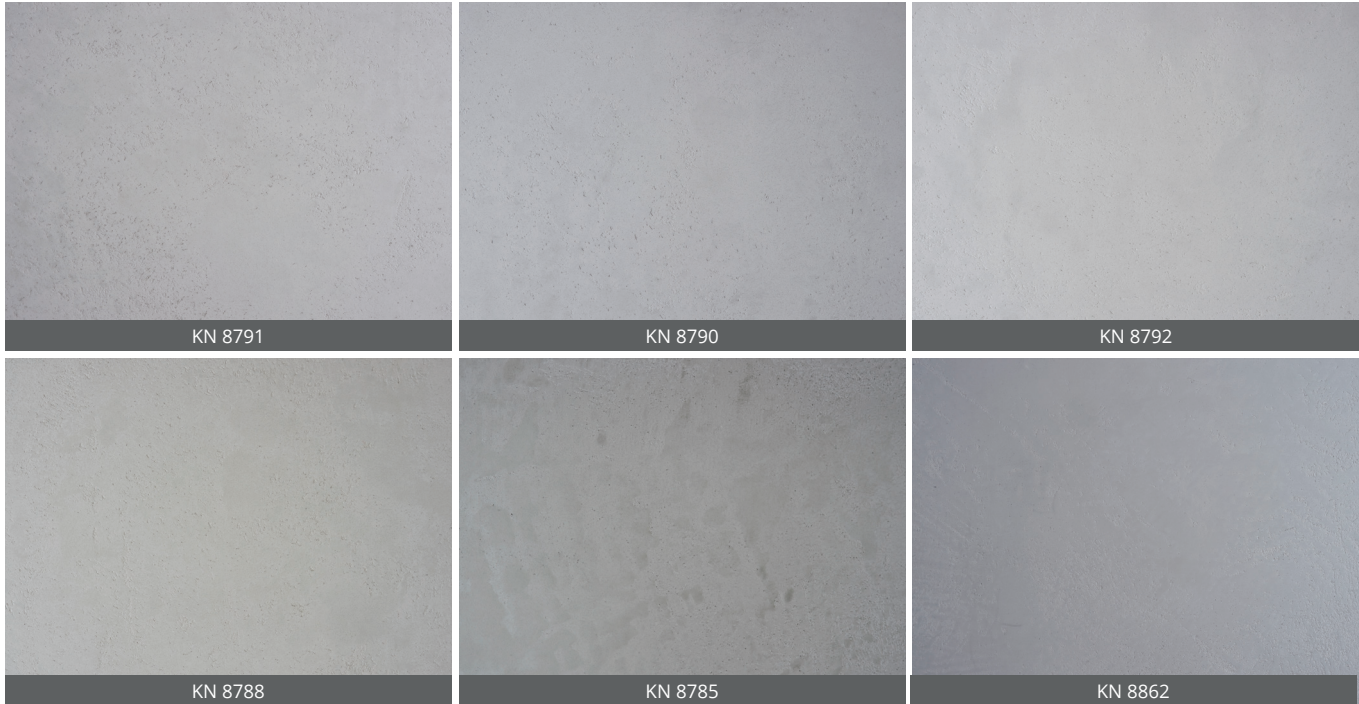
We can match to existing concrete or decorative elements to give you the perfect effect.

- A natural mineral product created from ultra-fine lime putty, marble powder and special additives
- Contains 40% pre-consumer recycled marble
- Low VOCs
- Class '0' / 'A' fire-rating

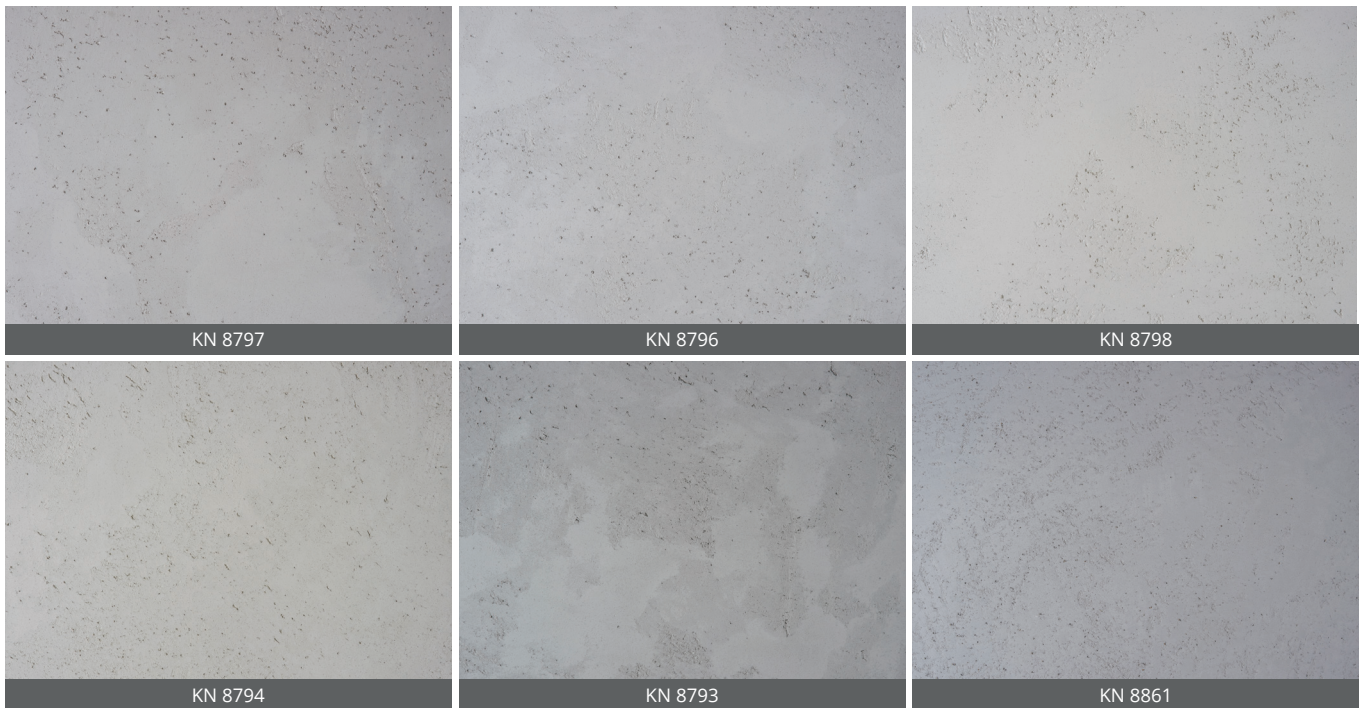


KonCrete Range

Honed



Textured



Colours and patterns illustrated are for guidance only. Due to print limitations, the exact patterns, colours and shades may vary from those shown. Please request a sample for accurate representation. These can be requested via the Armourcoat website by entering the product code.



For further information and the location of your nearest Armourcoat Surface Finishes agent, please visit our website.

Armourcoat Limited | Morewood Close | Sevenoaks | Kent | TN13 2HU | United Kingdom
Telephone: +44 (0)1732 460668 | Fax: +44 (0)1732 450930 | Email: specsales@armourcoat.co.uk

Armourcoat Surface Finishes Inc | 4330 Production Court | Las Vegas | NV 89115 | USA
Telephone: (702) 644-0601 | Fax: (702) 644-0554 | Email: sales@usa.armourcoat.com

www.armourcoat.com

©2017 Armourcoat Limited. KonCrete is a product and trademark of Armourcoat Ltd.

KNB0517